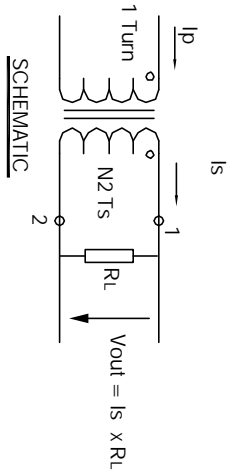


The information contained in this drawing is the sole property of CWS Coil Winding Specialist. Any reproduction in part or whole without written permission of CWS Coil Winding Specialist is prohibited.



Note: All measurements are carried out using rms value responding meter. Unless requested the terminating resistor and the 1-turn primary are not supplied.

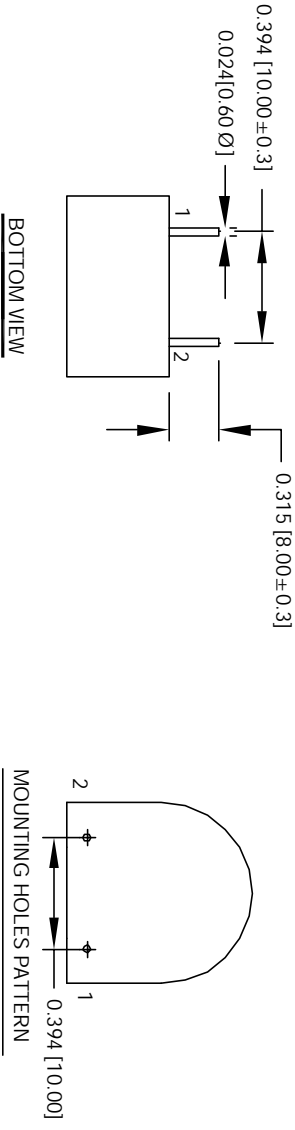
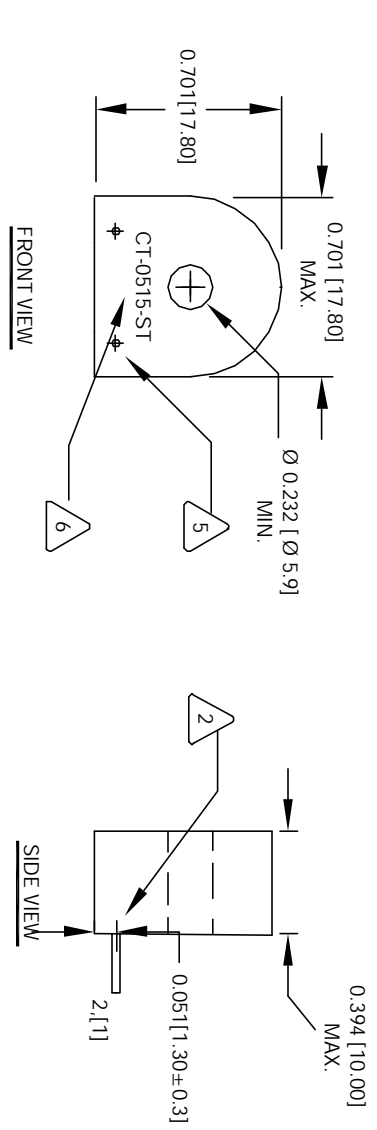
- 7 BUILT TO ROHS COMPLIANCE AND LEAD FREE.
- WHERE SHOWN
- 6 MARK PART NUMBER AND REVISION
- 5 REMOVE INSULATION, SOLDERED TO LEADS

- 4 CONSTRUCTION: ENCAPSULATED USING BOBBIN.
 OPERATING TEMP. = -25 °C TO 125 °C
 OUTPUT VOLTAGE AT RL AND MAX (In) = 0.4 V RMS
 BURDEN RESISTOR (RL) = 100 OHMS
 DC RESISTANCE @ 25 °C = 50 OHMS MAX
 MAX AMPLITUDE ERROR WITHIN RANGE OF (In) = ± 10%
 ACCURACY CLASS = ± 10%
 = 6 AMPS RMS MAX.
 MAX AC PRIMARY CURRENT WITHOUT SATURATION (I max),
 = 2 AMPS RMS NOMINAL.
 PRIMARY CURRENT RANGE WITH DEFINED ERROR TOLERANCES (In),
 SPECIFICATIONS @ 25 °C :

- 3 WIRE: UL RECOGNIZED 130 °C RATED MAGNET WIRE
 CWS BYTEMARK OR OTHER APPROVED PART
 - 2 CORE: TAPE WOUND
 - 1 MATERIAL: UL RECOGNIZED 94V-0 FOR FLAMMABILITY
- NOTES: UNLESS OTHERWISE SPECIFIED, 50/60 Hz CURRENT SENSOR.
 UNIT: INCHES [MM]
 READ FROM BOTTOM UP.

EP FORM0005 REV 3 10/01

REVISION HISTORY		SIGN & DATE				
REV	ECN	DESCRIPTION	BY	DATE	CHK	DATE
B		PRODUCTION RELEASE	RPR	3/12/07	JLAV	3/12/07



QTY	CODE	MFG. P/N	DESCRIPTION	ITEM NO.
	IDENT			
PARTS LIST				
AUTOCAD		X		
SOLIDWORKS				
SIGN		DATE		
DRAWN	RPR	3/12/07	COILWS.COM, INC CWS Coil Winding Specialist. 1510 E. Edinger Ave Unit B, Santa Ana, CA. 92705	
DESIGN	JLAV	3/12/07		
ENGR	KSUM	3/12/07		
APPR	JLAV	3/12/07		
TITLE		SIZE		
50/60 Hz Current Sense Transformer (AC)		DWG. NO.		
		SCALE		
		2=1		
		SHEET	1	OF 1

CAD-FILE: